



KKT TRAILER

POWER & ELEGANCE

**SEMI-TRAILER FUEL TANKER WITH
ADR CERTIFICATE**

LGBF





PRODUCTS

- ACID TANKER FOR TRUCK WITH ADR CERTIFICATE
- SEMI-TRAILER ACID TANKER WITH ADR CERTIFICATE
- CHEMICAL TANKER FOR TRUCK WITH ADR CERTIFICATE
- SEMI-TRAILER CHEMICAL TANKER WITH ADR CERTIFICATE
- SEMI-TRAILER CHEMICAL TANKER
- FUEL TANKER FOR TRUCK WITH ADR CERTIFICATE
- **SEMI-TRAILER FUEL TANKER WITH ADR CERTIFICATE**
- SEMI-TRAILER FOOD TANKER
- FOOD TANKER FOR TRUCK



kkt_trailer



Körfez Krom Tanker



0549 300 4141

0532 381 7946





WE PRODUCE VALUE

DEAR CUSTOMERS

We adopt the basic principle of flexible production approach to offer solutions specific to the needs of our customers. Our semi-trailer fuel tanker, which is made of high-strength carbon-steel materials according to ADR - EN 13025 regulations, geographical region, climate and road conditions that it will serve, in thicknesses suitable for design calculations, cylindrical bottle type cross-section, wide volume range, top - bottom filling, in accordance with LGBF tank code and hierarchy, can carry hazardous materials in ADR Class-3 in one or up to six compartments, driven and discharged to the flow; defies both roads and years with its body structure and technology that makes it privileged with its special positioning while being produced with the longest welding seam technology and with the minimum joint (T) point consisting of seamless monolithic plates in the main body structure.

Step into the world of KKT Trailer, where precision engineering and unique craftsmanship come together. Proudly advancing in the field of tanker manufacturing, KKT Trailer takes pride in shaping the future of liquid transport solutions. We stand out with our commitment to innovation, quality, and customer satisfaction. Navigate through the pages to discover various tanker models, each reflecting KKT Trailer's dedication to excellence. At KKT Trailer, we don't just produce tankers; we craft reliability, efficiency, and durability. Join us on a journey where every detail matters, and each tanker embodies our engineering excellence.

EMAIL

bilgi@kkctrailer.com
teknik@kkctrailer.com
muhasebe@kkctrailer.com

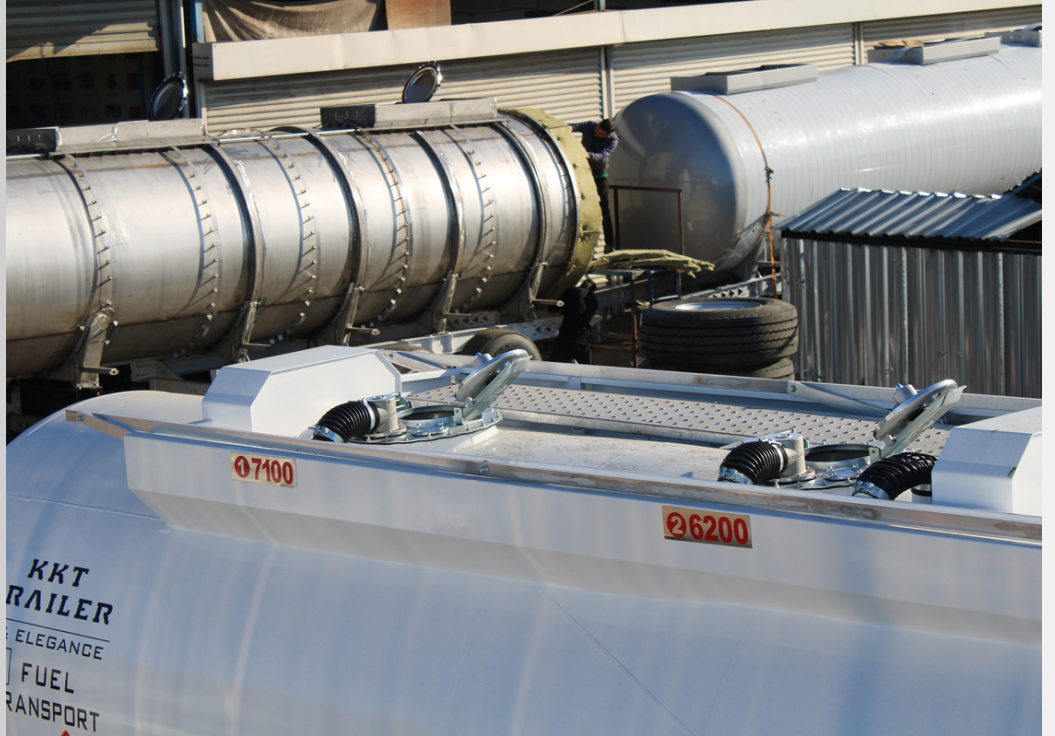
WEB

www.kkctrailer.com

KÖRFEZ KROM TANKER reserves the right to make changes in product specifications. Please contact our company for detailed information about the wide range of options.



Our tanker designs reflect a commitment to quality and innovation. Meticulously crafted with high engineering precision, our designs prioritize efficiency, safety, and functionality. Every detail is thoughtfully considered to ensure optimal performance and durability. If you are seeking a blend of excellence and reliability, choose our tanker designs that set new standards in the industry.



EUROPEAN STANDARD LOAD DISTRIBUTION



Our load distribution adheres to European standards, ensuring optimal balance and safety. Compliant with stringent regulations, our systems are engineered to meet the highest industry benchmarks for secure and efficient load distribution.

CAPACITY	25000 It - 38000 It
COMPARTMENT	1- 6
SECTION	CYLINDRICAL BOTTLE TYPE
MATERIAL	CARBON-STEEL (Min 3mm)
WEIGHT	7000 kg - 8000 kg
HEIGHT	Max 3800 mm
WIDTH	Max 2550 mm
FILLING	BOTTOM AND TOP
DESIGN TEMPERATURE	-20° - +150°
DESIGN PRESSURE	0.5 BAR
AXLE DISTANCE	1310 mm

SUCCESS RATE %100				
MAIN MEASUREMENTS	MAX LOAD ALLOWED	IDEAL LOAD	TESTED	RESULT
KING PIM	11500 kg	10500 kg	10450 kg	DONE
AXLE 1	8000 kg	7300 kg	7260 kg	DONE
AXLE 2	8000 kg	7300 kg	7260 kg	DONE
AXLE 3	8000 kg	7300 kg	7260 kg	DONE
TOTAL	35500kg	32400 kg	32230 kg	DONE



It is manufactured as a welded construction from high-strength carbon-steel material in accordance with ADR and the quality of the materials is presented with documented quality standards.

The thicknesses of the materials are in compliance with ADR. The cross-section of the tanker is cylindrical bottle type. The front, rear, and compartment vessels are torispherical dished head. Compartment vessels are positioned in accordance with capacity and standard tank support elements.

In summary, our tanker, crafted from high-strength carbon-steel and meeting ADR standards, ensures safety with documented quality controls. Adhering to ADR-compliant thickness, its cylindrical bottle type design and strategic compartment placement underscore efficiency and reliability.

Longitudinal Bending in Tanker Production: Elevating Performance and Efficiency

This unique method involves bending the tanker body longitudinally, allowing us to achieve increased carrying capacity, strategic compartment placement, and aerodynamic advantages.

BODY EQUIPMENTS



MENHOLES

20" sized manhole throat is mounted in each compartment, so that it can be entered inside the tank when necessary.

FLANGES

With special production flanges, the assembly of standard equipment is facilitated.

RAILING

The barriers, which can be pneumatically or manually opened prior to walking on the tanker, ensure your safe operation.

OVERFLOW POOL

The manhole covers and the walking area are taken into an overflow pool that extends from the front of the tank to the back.

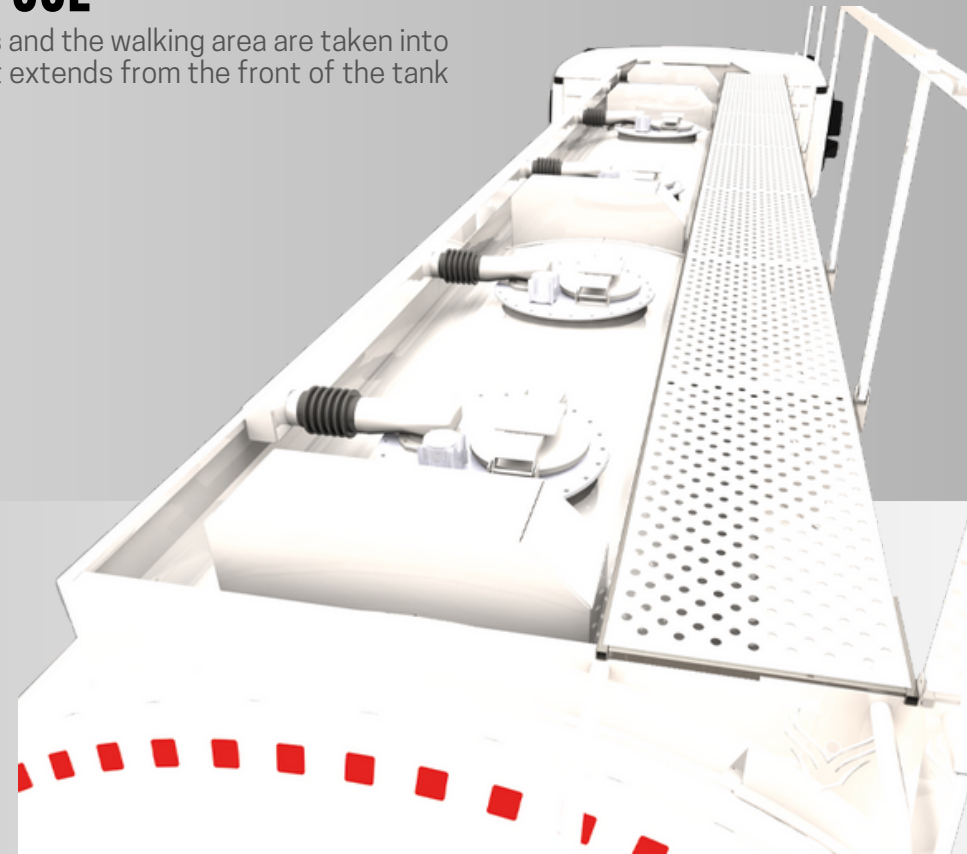
TRAVERSE BOX

Traverse box is mounted on the top of the tank to protect the equipment in case of tipping.

RAINWATER LINE

We install high-strength and carbon steel pipes seamlessly and with bends for the drainage of rainwater and overflow liquids from the pool.

Explore the taste of performance with our user-centric designed Body Equipments. Starting from advanced protective coatings, we prioritize durability, safety, and efficiency in our solutions. We redefine industry standards with structural reinforcements, streamlined aerodynamics, and ergonomic access solutions. Invest in excellence by optimizing your fleet with our vehicles, setting new standards in durability and performance.



OUTLINE

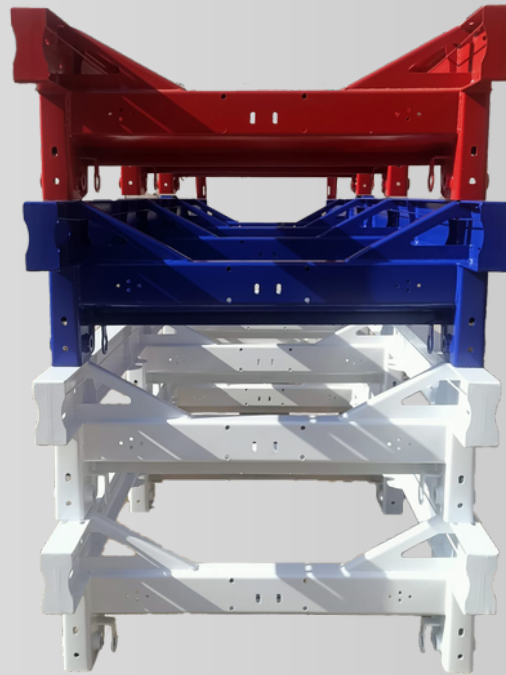
Our tanker chassis stands out with its ergonomic design and is meticulously crafted from highly durable IPE200 material. This material, renowned for its durability and strength, forms the foundation of our design philosophy. Our goal is not just to provide a product but to offer a reliable solution that exceeds industry standards.

TRAVERS

This component, distinguished by material quality, CNC cutting technology, and precise bending, combines quality and reliability in every detail, delivering a performance that surpasses our customers' expectations.

PARTS

Standard production quality is ensured by passing each piece through CNC units.



AXLE LUGS

The specified brand's standard lugs are utilized for the axles. This part selection reflects our commitment to reliability and adherence to industry standards. The use of these standard axle lugs not only aligns with our quality commitment but also ensures compatibility and seamless integration within the specified brand's axle system.

Our chassis stands out with its robust and durable structure, positioning itself as a pioneer in the transportation industry, thanks to its innovative features. Surpassing industry standards, this chassis offers a customizable design that perfectly adapts to diverse needs, providing our customers with a broad range of applications. The powerful foundation, coupled with its customizable design, makes it an optimal solution for meeting various transportation requirements.



TANKER EXTERIOR DESIGN



SANDBLASTING

After undergoing a meticulous sandblasting process, the tanker not only has its external surface thoroughly cleaned but also addresses any surface irregularities such as rust, paint defects, and corrosion with meticulous care. The sandblasting procedure ensures that the tanker's surface achieves an optimal level of smoothness, eliminating any factors that could potentially hinder its structural integrity. Welding defects are corrected with precision, and any effluence or flaw that could jeopardize the overall quality of the tanker's surface is carefully rectified. This comprehensive approach not only enhances the visual appeal of the tanker but also significantly increases its durability and performance. As a result, the tanker is ready to face the challenges of transportation and environmental conditions with improved resilience and durability after the painting process.

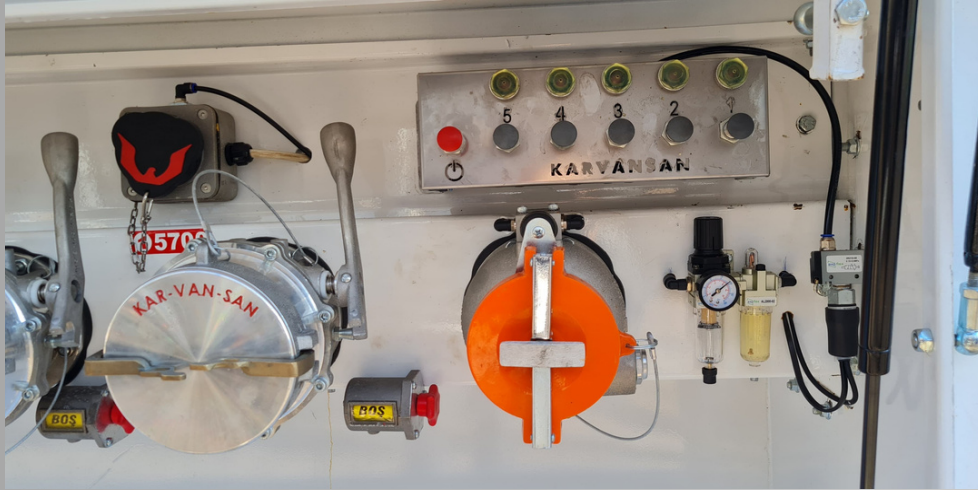


PAINTING

The body and other related parts of the tanker are completely cleaned. Surface roughness, welding defects, bleeds, etc. is resolved. Afterwards, it is painted at least 2 layers with a corrosion resistant epoxy primer paint. After priming, the surface is smoothed by applying satin paste and it is ready for the final coat of paint. After all the preparations are made, one layer of acrylic paint with a specially selected color is applied, and then the painting process is completed with 2 layers of acrylic paint, the brightness of which is increased with varnish. After the paint is completely dry, paint thickness measurements are made on the tank surface and the micron records quality file is added.

FILLING

Fuel tankers with bottom loading feature are used to transport and deliver liquid fuel, such as gasoline, diesel, or other petroleum products. As the name suggests, they are designed to be filled from the bottom, not the top.



ADVANTAGES:

Fuel tankers with bottom loading feature offer several advantages, including fast loading times, reduced risk of spills and vapors, and increased safety compared to top loading methods. They are commonly used for transporting and distributing fuel to fuel stations, industrial facilities, and other users.

THE MAIN COMPONENTS ARE AS FOLLOWS:

- **Connection Point:** In the fuel depot or loading terminal, there is a specific connection point where the tanker can be attached. The bottom loading system includes a series of pipes and valves located at the bottom of the tanker. These pipes are connected to storage tanks in the depot. KARVANSAN brand products are preferred for the use of these pipeline components. Pneumatic elements are used throughout the system.
- **Safety Measures:** This includes measures to prevent the accumulation of static electricity by grounding the tanker, ensuring all valves are properly opened, and utilizing sensors in manhole covers to prevent overflowing during filling based on capacity. SAFFZEN brand products are preferred for these sensors.
- **Loading Process:** Once everything is installed and ensured to be safe, the loading process begins. Fuel is pumped from storage tanks to the tanker through the bottom loading system. This process is typically electronically controlled to ensure accuracy and safety.
- **Monitoring:** Throughout the loading process, various parameters such as pressure, temperature, and flow rate can be monitored to ensure that everything is progressing smoothly.
- **Completion and Departure:** When the tanker is filled to its capacity or as per the order, the loading process is halted, and the valves are closed. The tanker truck is disconnected from the loading terminal and prepared for transportation.

9



STOP WITH ONE BUTTON

These buttons allow you to turn off the entire bottom filling system in the tank in an emergency.

ARMATURE BOX DESIGN



With a focus on functionality, these features ensure efficient operation and reliability in diverse industrial applications, making our discharge line a versatile and reliable choice for fluid management.



DISCHARGE LINE

Boasting a sleek and minimalist design to ensure user-friendly operation, our discharge line is thoughtfully equipped with a supplied discharge adapter and hose for enhanced convenience and functionality across a range of applications and industries, making it a reliable and versatile choice in fluid management. Trust in our commitment to quality and efficiency for seamless performance in your fluid-handling needs.

ARMATURE BOX

Box body can be produced from carbon steel or aluminum material. They are assembled and welded in a dustproof, waterproof structure. It has a modern and useful design for product placement and ease of use. In addition, there is a ball valve in order to discharge the accumulated liquids on the box floor in a controlled manner.

ARMATURE BOX COVER

Our box covers, which open and close parallel to the box surface in an accordion way, are produced in the best possible form by making all engineering calculations in order to extend the life of the door shock absorbers. Stainless locks on the door can be locked with both key and padlock. There is also a plastic handle to hold the cover.

THE GIANTS OF THE SECTOR CARRY OUR BRAND,

a testament to our unwavering commitment to excellence and innovation. As pioneers in the industry, we continue to set the standard for quality, reliability, and customer satisfaction. Our brand is not just a symbol; it's a representation of the trust and confidence that leaders in the field place in our products and services.



These axles stand out with their economical and sturdy design. Moreover, they feature an efficient disc brake system and an impressive 10-tons carrying capacity, making them a reliable and cost-effective choice for various heavy-duty applications in the transportation industry.



With its sleek and ergonomic design, this product is not just visually appealing but also widely adopted for its practical features. Equipped with a reliable disc brake system, it ensures efficient and secure operation. The impressive 9-tons carrying capacity adds to its versatility, making it a preferred choice for various heavy-duty tasks.



Combining a professional and lightweight design, this widely-used product is known for its practicality. The integrated disc brake system enhances its safety features, and with a carrying capacity of 9-tons, it stands out as a reliable and versatile solution for various applications.

TANKER TESTS

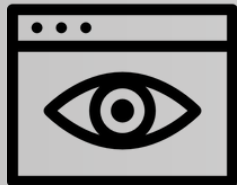


Tanker tests are essential evaluations ensuring the reliability and safety of these critical transport vessels. Assessments cover structural integrity, leakage prevention, stability, loading efficiency, emergency response, and environmental impact. These tests aim to guarantee that tankers meet high-quality standards, ensuring secure and efficient transportation of liquids and hazardous materials.



RADIOGRAPHIC TEST

RT is applied to key points with high dynamic loads. This non-destructive method, using X-rays or gamma rays, identifies potential defects in material structures. Strategically applying RT ensures structural integrity under dynamic conditions, reflecting a commitment to safety and reliability standards.



VISUAL TEST

All welds on the tanker undergo a meticulous Visual Test, a process in which certified specialist personnel conduct thorough visual inspections. This stringent examination ensures that each weld is scrutinized with precision, adhering to the highest quality standards. This careful scrutiny not only guarantees structural integrity but also reflects our unwavering commitment to safety and excellence in tanker fabrication.



HYDROTEST

During the Hydrotest process, the entire tanker is meticulously filled with water and subjected to pressure to thoroughly inspect all welds. This comprehensive evaluation ensures the integrity and reliability of each weld. The application of pressure allows for a meticulous assessment that verifies the robustness of the welds. This systematic approach not only guarantees the structural durability of the tanker but also emphasizes our commitment to rigorous quality assurance in the manufacturing process.



IMPERMEABILITY TEST

The impermeability test involves filling the tanker with water and pressurizing it to detect leaks in the equipment. This ensures the tanker's integrity, meeting safety standards for the secure transport of liquids, and preventing environmental hazards. Following the impermeability test, any identified leaks or issues are promptly addressed, reinforcing the commitment to maintaining a high level of safety and environmental protection in the transportation of liquids.



ADR VEHICLE CONFORMITY

ADR vehicle conformity involves a thorough inspection conducted by a TSE authorized expert. This general examination ensures compliance with ADR regulations. Following the test, the vehicle is issued an ADR inspection certificate and a T9 certificate, confirming its ability to safely and compliantly transport hazardous materials according to international standards.



KKT TRAILER, produces innovative solutions for different needs that arise every day in the logistics sector. By prioritizing the ease of use of our customers in our fuel tankers, we also produce a product that meets the standards by performing all certification procedures. We offer diversity and optimum price in our products. In our tankers, the longest unique seam welding is performed with robot welding technology and our expert welders in the field, especially for our carbon-steel tankers, we have internal sandblasting and epoxy paint application. In addition, depending on the customer request, we can apply the company logo and advertisement with paint.

WHY US?



INNOVATIVE

In our collaborative efforts with both customers and suppliers, we specialize in engineered products. Utilizing the latest technologies and cutting-edge features, we tailor our solutions to the unique requirements of the industry. With a continuous commitment to innovation, we don't just deliver products; we provide proven solutions that empower our customers to succeed.

COMPREHENSIVE EXPERTISE

Within our organization, a synergy of engineering, production, sales, and support talents collaboratively operates to provide a broad product portfolio and tailor-made solutions. Our comprehensive dealer and service network ensures a seamless customer experience from start to finish. Moreover, we take pride in attracting the industry's most specialized manufacturing talent, fostering a finely-tuned expertise that is exclusive to the esteemed family of brands under KKT TRAILER. This unique blend of skills and resources positions us as a dynamic force in delivering excellence across all facets of our operations.

UNITY

Cultivating intimate and trusting relationships with our customers is at the core of our approach. By deeply understanding their unique needs, we embark on a collaborative journey to develop tailor-made solutions that not only address their immediate requirements but also propel them toward achieving their long-term goals. These enduring partnerships serve as the catalyst for the continuous innovation and development of the most advanced products within the industry, showcasing our commitment to exceeding expectations and delivering excellence at every step of the way.

SAFETY-ORIENTED

In our company, our foremost commitment is the preservation of lives – those of our employees, customers, operators, and the general public. Ensuring a safe return home for everyone at the end of the day is our highest priority. We firmly believe that, as a responsible corporate entity, prioritizing safety is paramount. Our dedication to this principle is evident in our daily endeavors, as we meticulously integrate safety considerations from the design phase through production and product usage. Safety serves as the bedrock upon which we build our daily operations, reinforcing our unwavering commitment to the well-being of all stakeholders.

PERFORMANCE

For more than two years, our brands have been designing high-performance products in the industry. This experience stems from our steadfast commitment to producing reliable, transformative, and efficient equipment that enhances the operations of our customers. Our products have become synonymous with longevity and durability, making them a preferred choice for operations worldwide.

In summary, choosing us means choosing a reliable partner with a proven track record, a commitment to customer satisfaction, and a dedication to delivering innovative and sustainable solutions that stand the test of time.



KKT TRAILER

POWER & ELEGANCE

KORFEZ KROM TANKER
INS. TAAH. SAN. VE TIC LTD STI
YENİYALI MAH
MILLI EGEMENLIK CD.
YARIMCA KUCUK SANAYI SITESI
H BLOK NO: 108
KORFEZ / KOCAELI
TURKIYE



+90549 300 4141
+90532 381 7946

2024KOCAELI